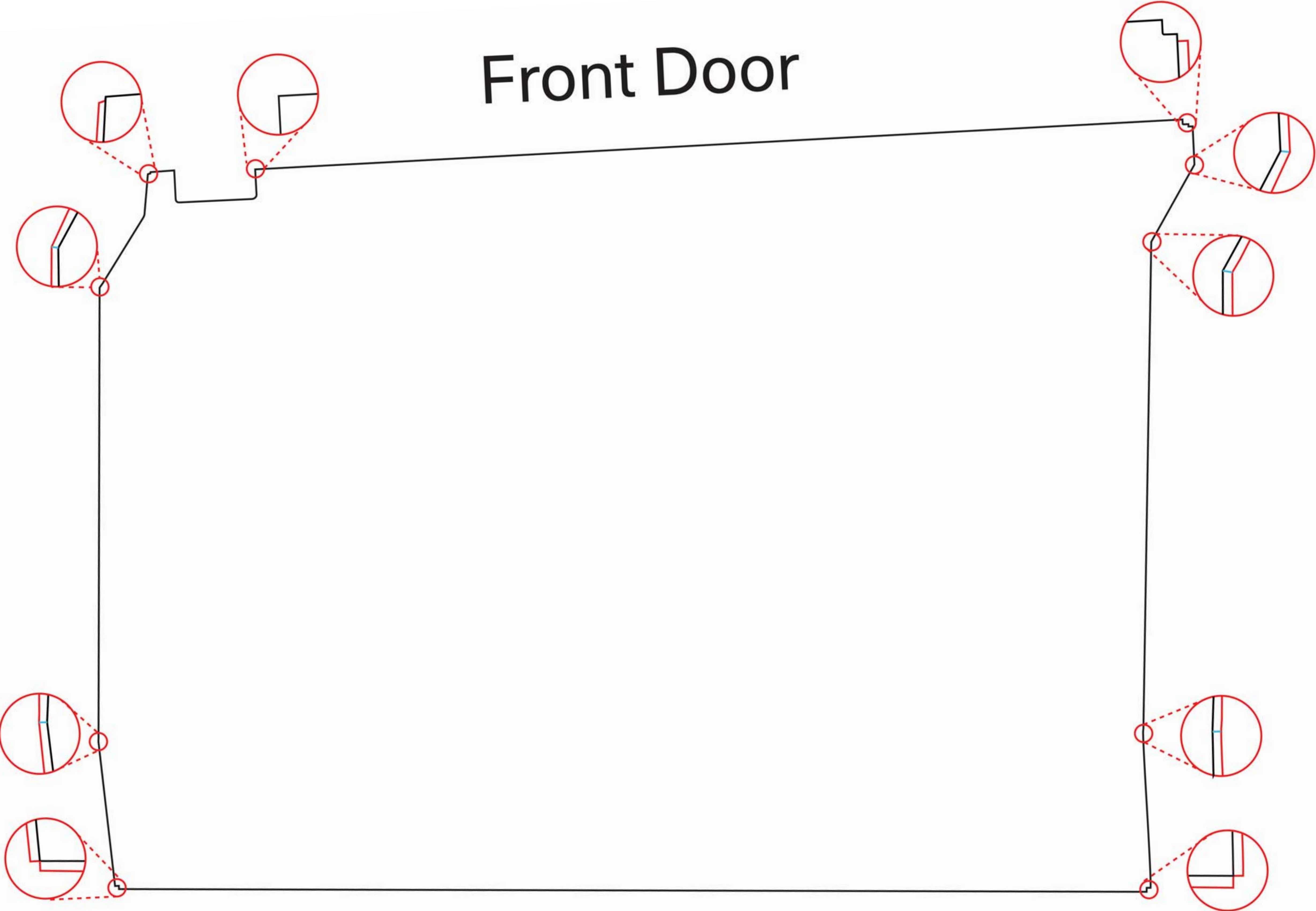
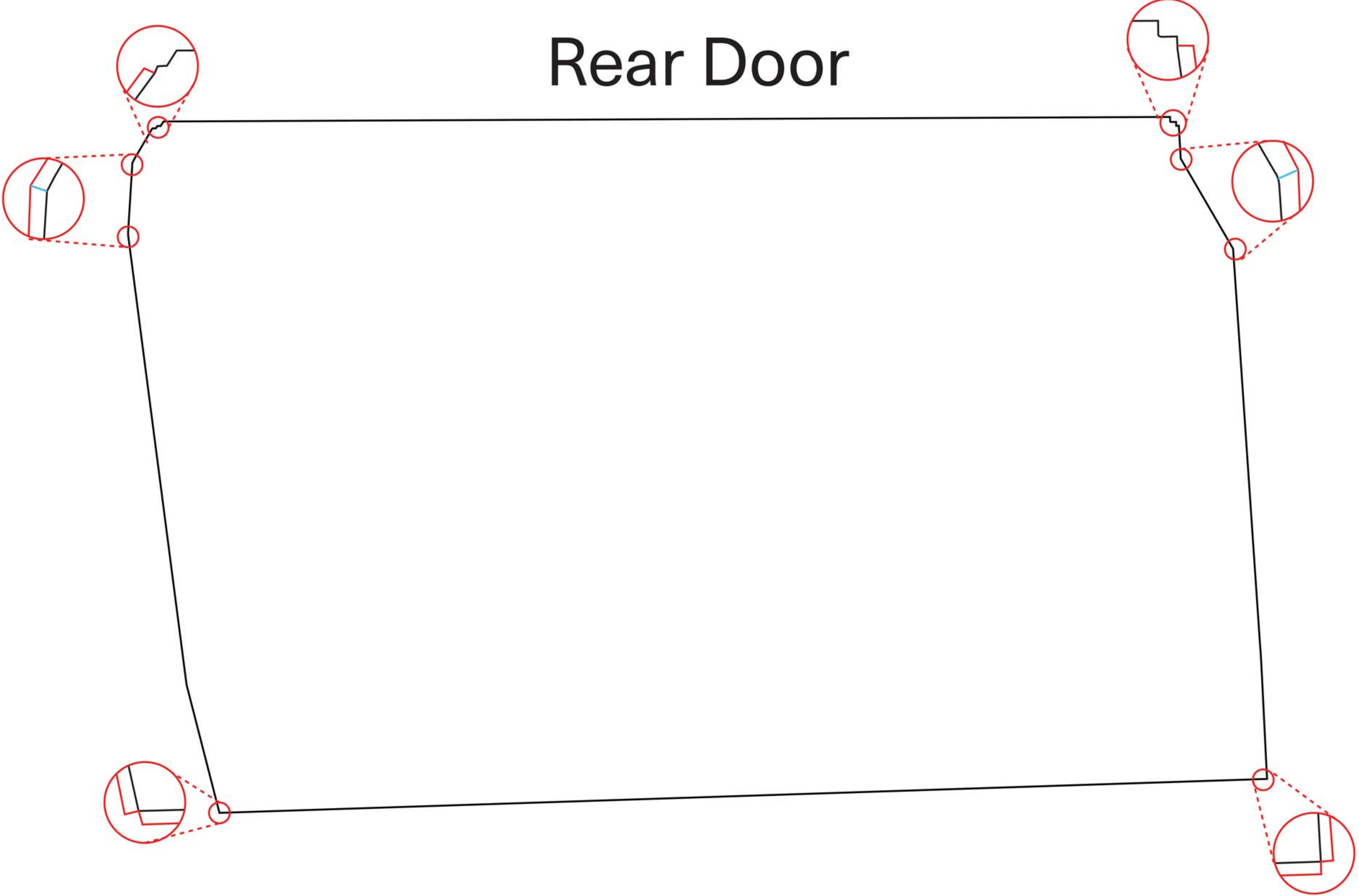


# Front Door



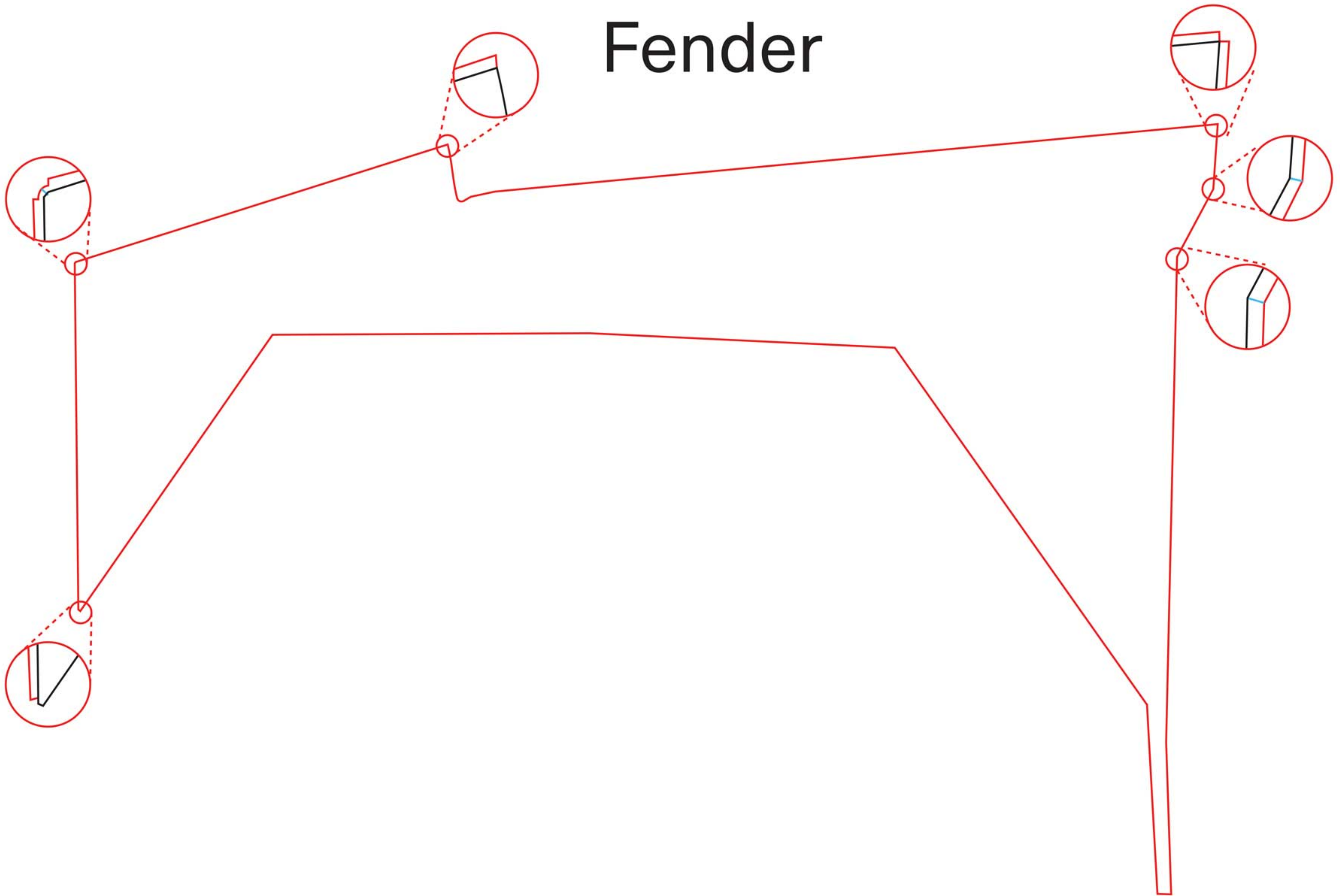
- Align to Panel
- Split-cut: Wrap Around Edge
- Wrap Around Edge

# Rear Door



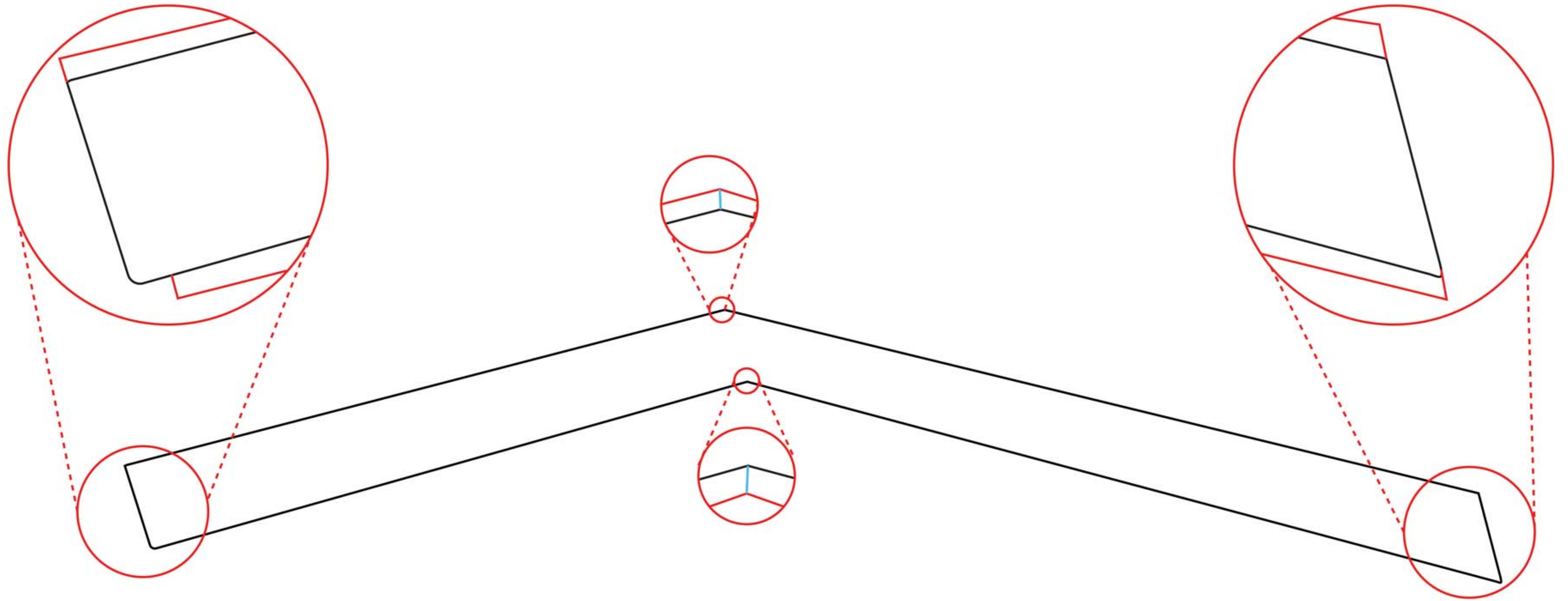
- Align to Panel
- Split-cut: Wrap Around Edge
- Wrap Around Edge

# Fender



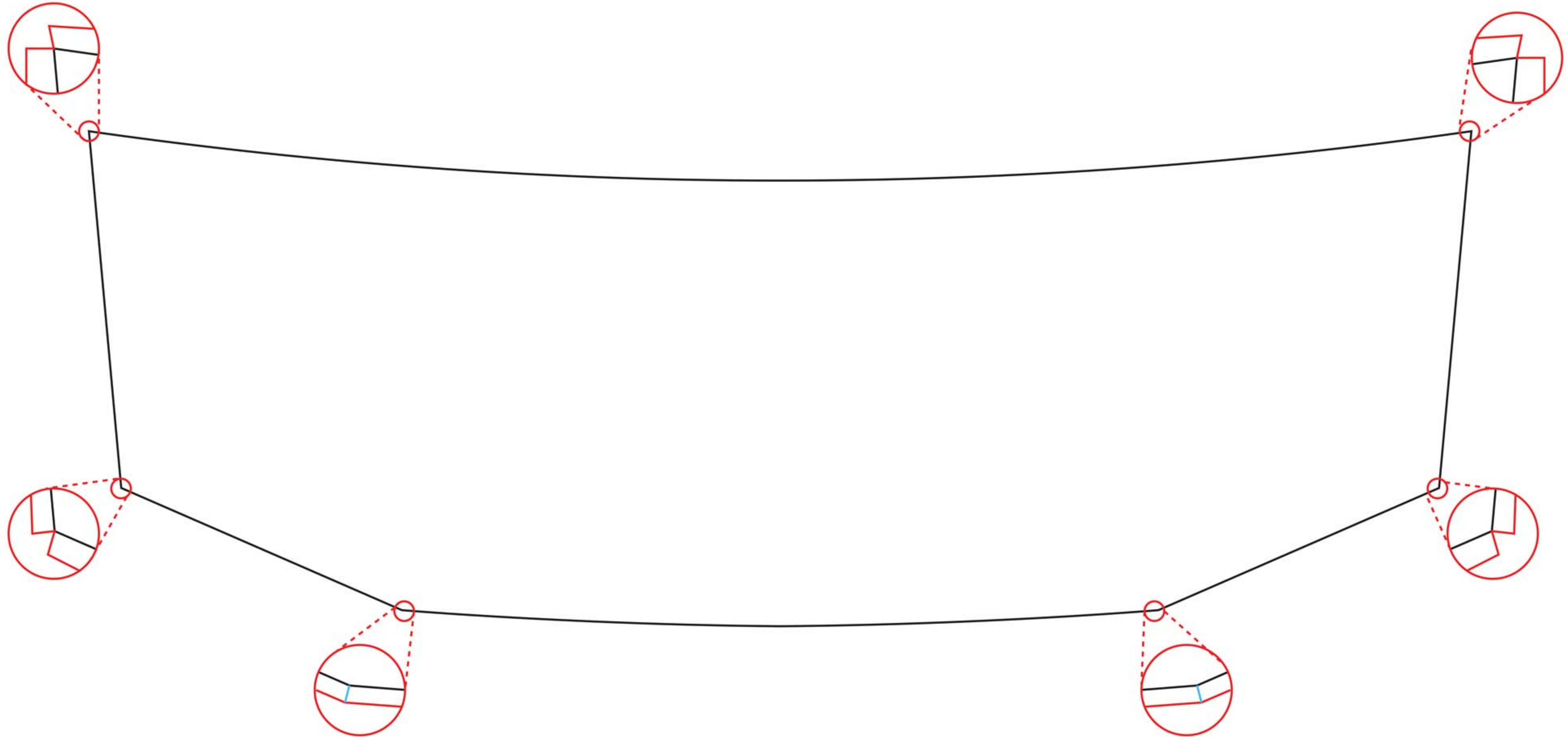
- Align to Panel
- Split-cut: Wrap Around Edge
- Wrap Around Edge

# Pillar



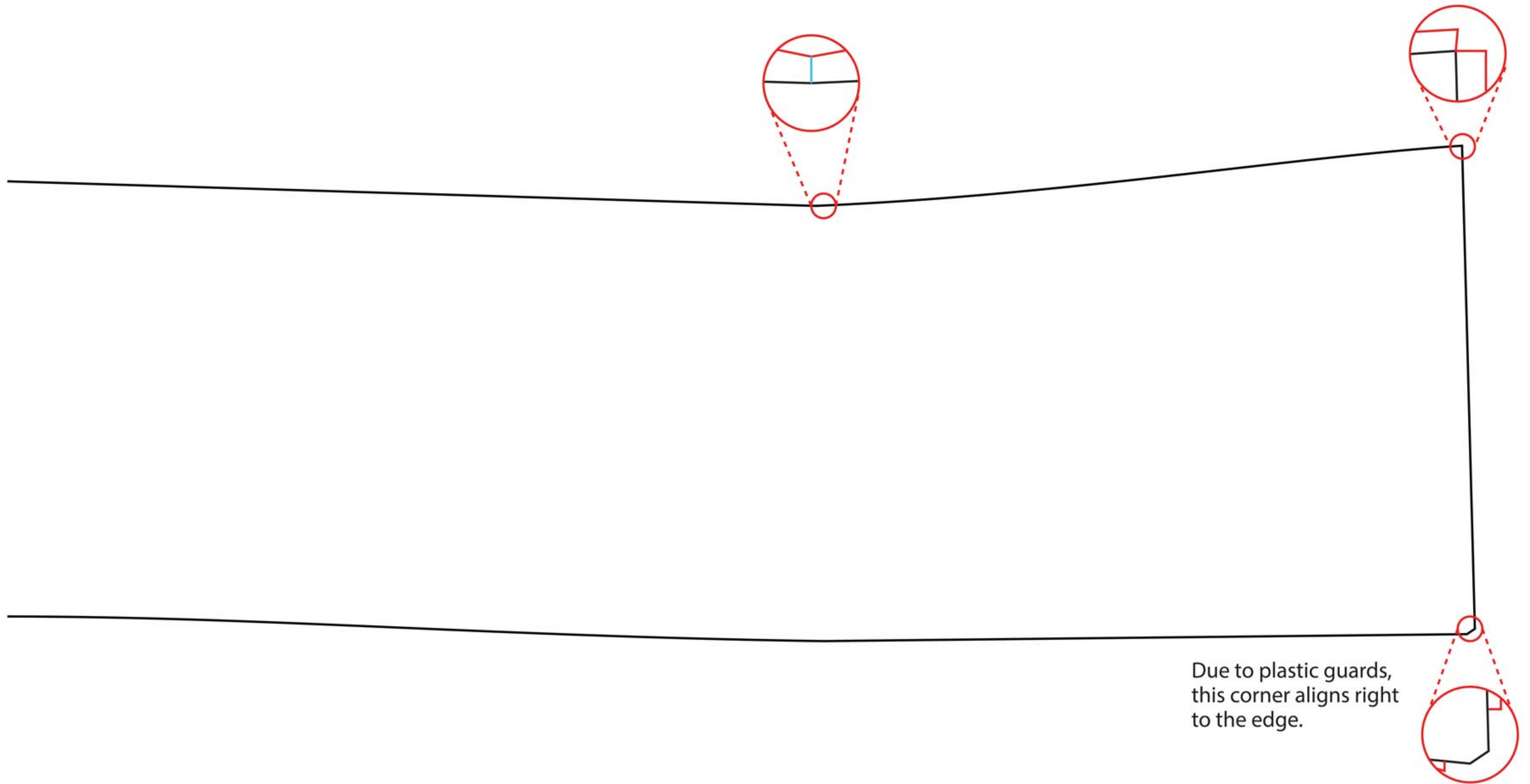
- Align to Panel
- Split-cut: Wrap Around Edge
- Wrap Around Edge

# Hood



- Align to Panel
- Split-cut: Wrap Around Edge
- Wrap Around Edge

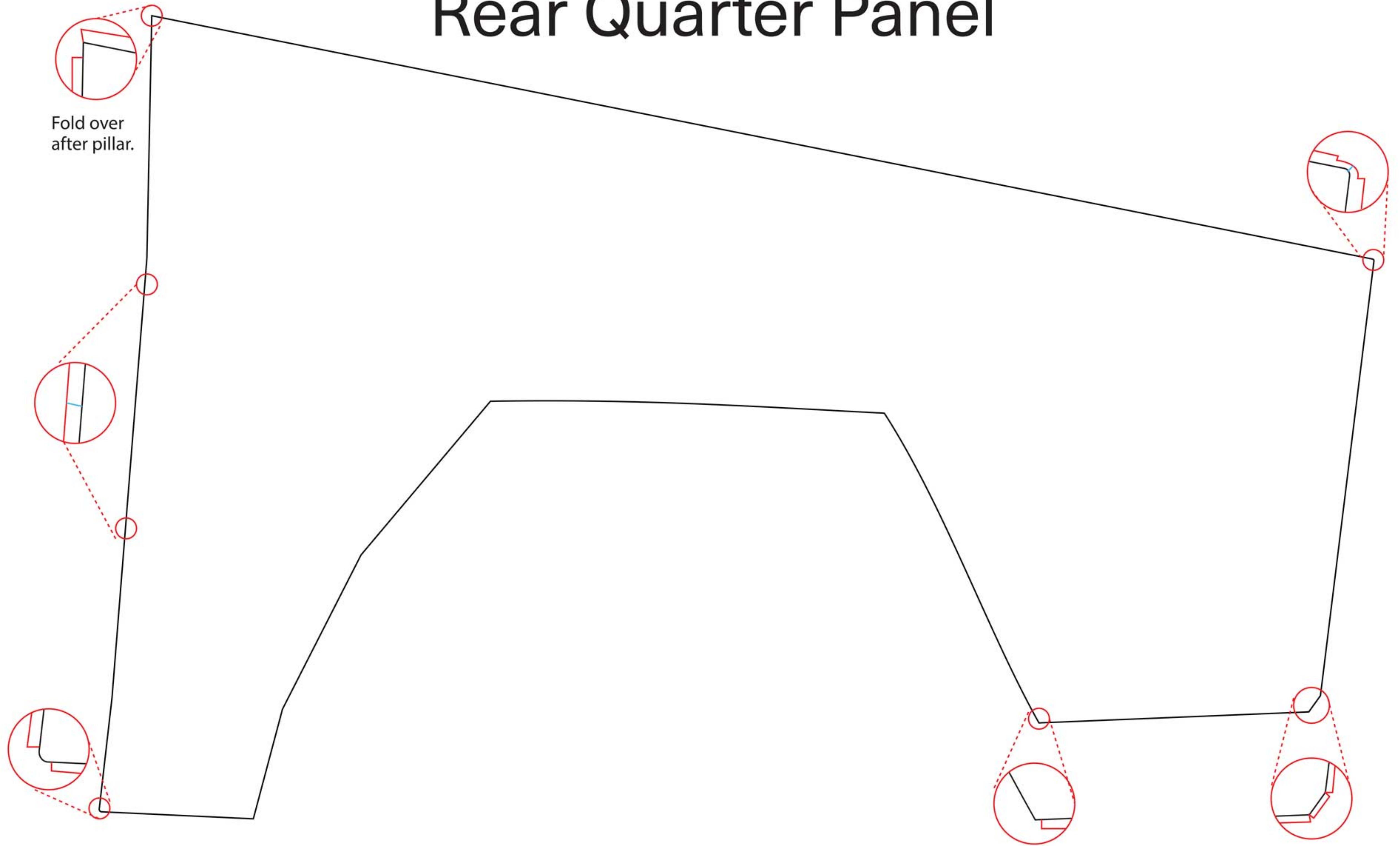
# Bumper



Due to plastic guards,  
this corner aligns right  
to the edge.

- Align to Panel
- Split-cut: Wrap Around Edge
- Wrap Around Edge

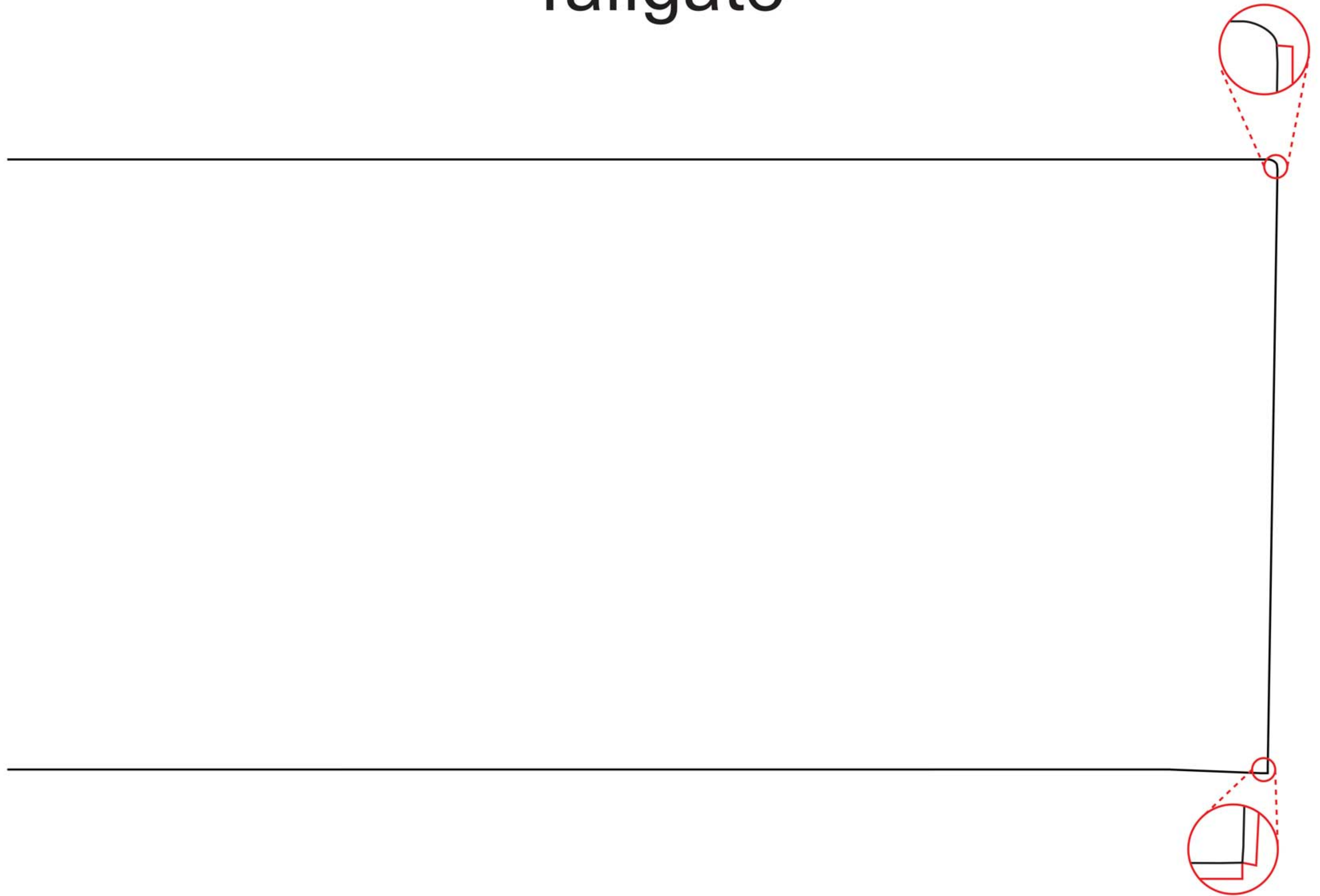
# Rear Quarter Panel



Fold over  
after pillar.

- Align to Panel
- Split-cut: Wrap Around Edge
- Wrap Around Edge

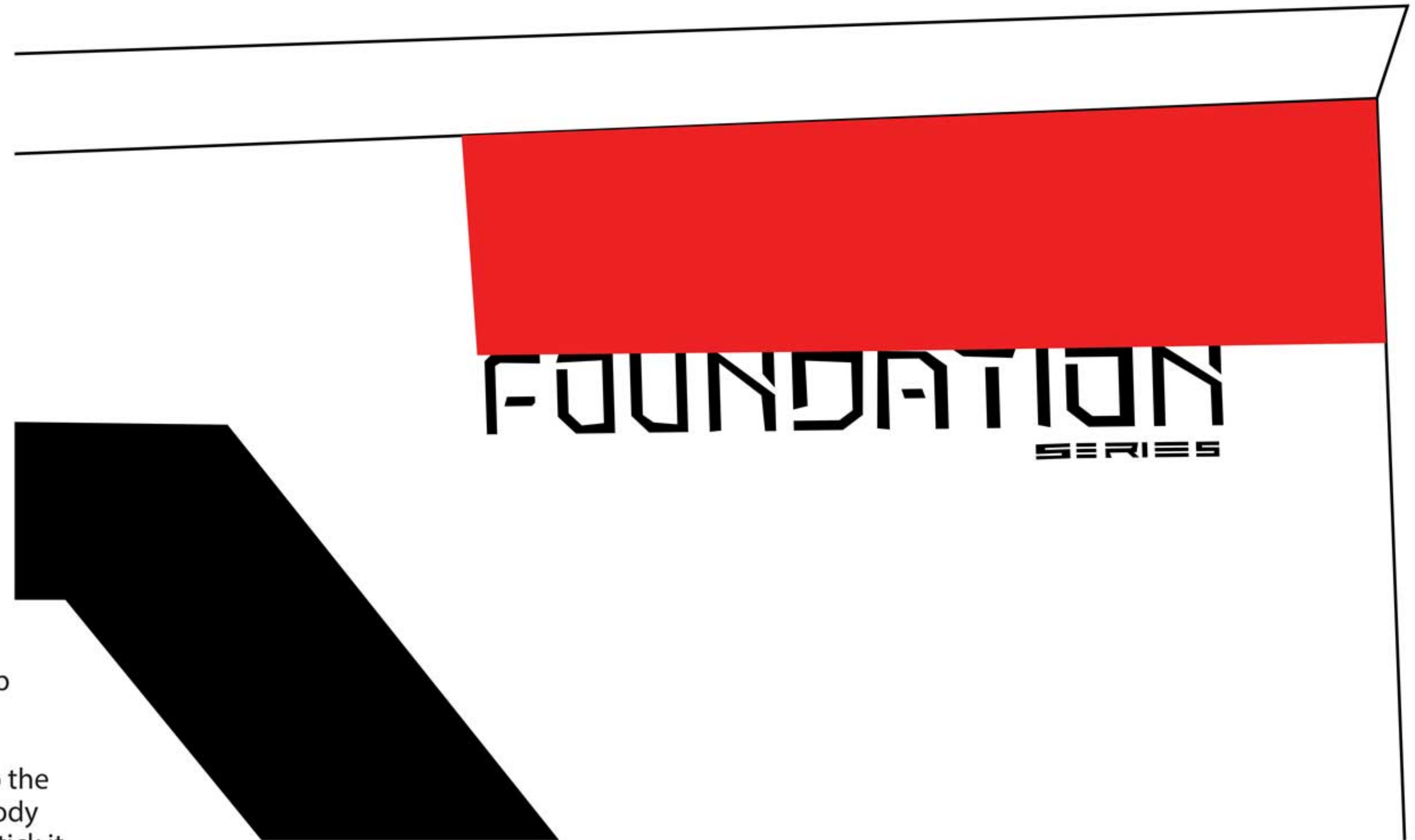
# Tailgate



- Align to Panel
- Wrap Around Edge

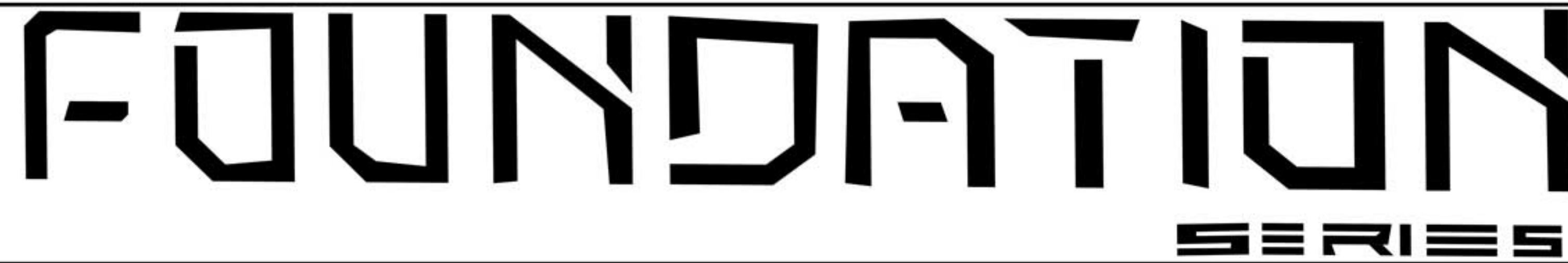


# Fender Foundation Badge



- First clean the area with alcohol wipes or your prep bottle.
- Use the guide and line it up to the edge nearest to the front door. The top should line up with the hard body line. Once you feel comfortable, stick it but don't stick it too hard since you'll remove it right away.
- Apply the transfer paper on top of the foundation badge. Use the provided squeegee to push it down.
- Remove the transfer paper slowly. Align to the edge opposite to the front door and to the top of the bottom line. Once you're happy with your alignment, use your fingers to push it down. Use the squeegee and give it a good even squeegee across.
- Starting with the "F" side, peel from the top corner and slowly peel away making sure the letters aren't peeling. If it does, push it back down with your fingers.

# Tailgate Foundation Badge

The logo features the word "FOUNDATION" in a large, bold, black, blocky font. Below it, the word "SERIES" is written in a smaller, black, blocky font. To the right of the text is a red rectangular area with a rounded top-right corner. The entire logo is framed by two horizontal black lines above and below it.

FOUNDATION  
SERIES

- First clean the area with alcohol wipes or your prep bottle.
- Use the guide and line it up to the right edge and on the hard body line. The bottom should line up with the hard body line. Once you feel comfortable, stick it but don't stick it too hard since you'll remove it right away.
- Apply the transfer paper on top of the foundation badge. Use the provided squeegee to push it down.
- Remove the transfer paper slowly. Align to the side edge and to the top of the body line. Once you're happy with your alignment, use your fingers to push it down. Use the squeegee and give it a good even squeegee across.
- Starting with the "F" side, peel from the top corner and slowly peel away making sure the letters aren't peeling. If it does, push it back down with your fingers.